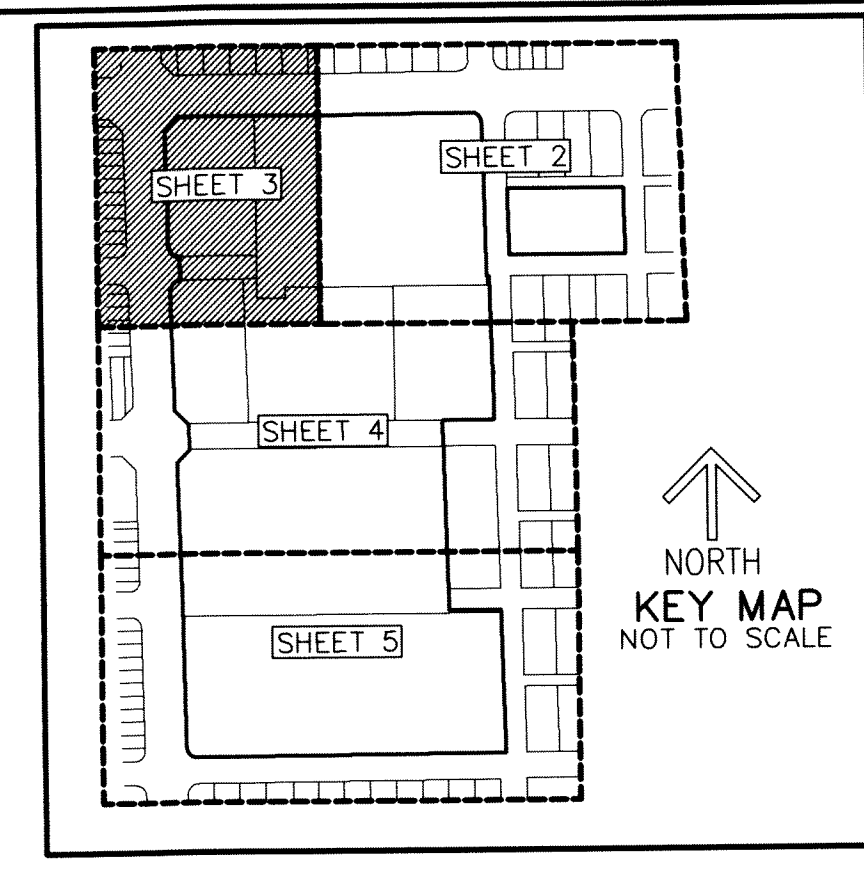


THIS INSTRUMENT PREPARED BY
 DAVID P. LINDLEY
 OF
CAULFIELD and WHEELER, INC.
 SURVEYORS - ENGINEERS - PLANNERS
 7900 GLADES ROAD, SUITE 100
 BOCA RATON, FLORIDA 33434 - (561)392-1991
 CERTIFICATE OF AUTHORIZATION NO. LB 3591

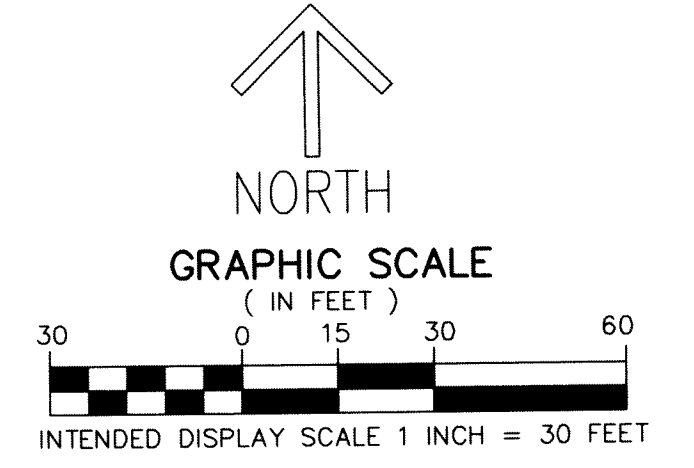
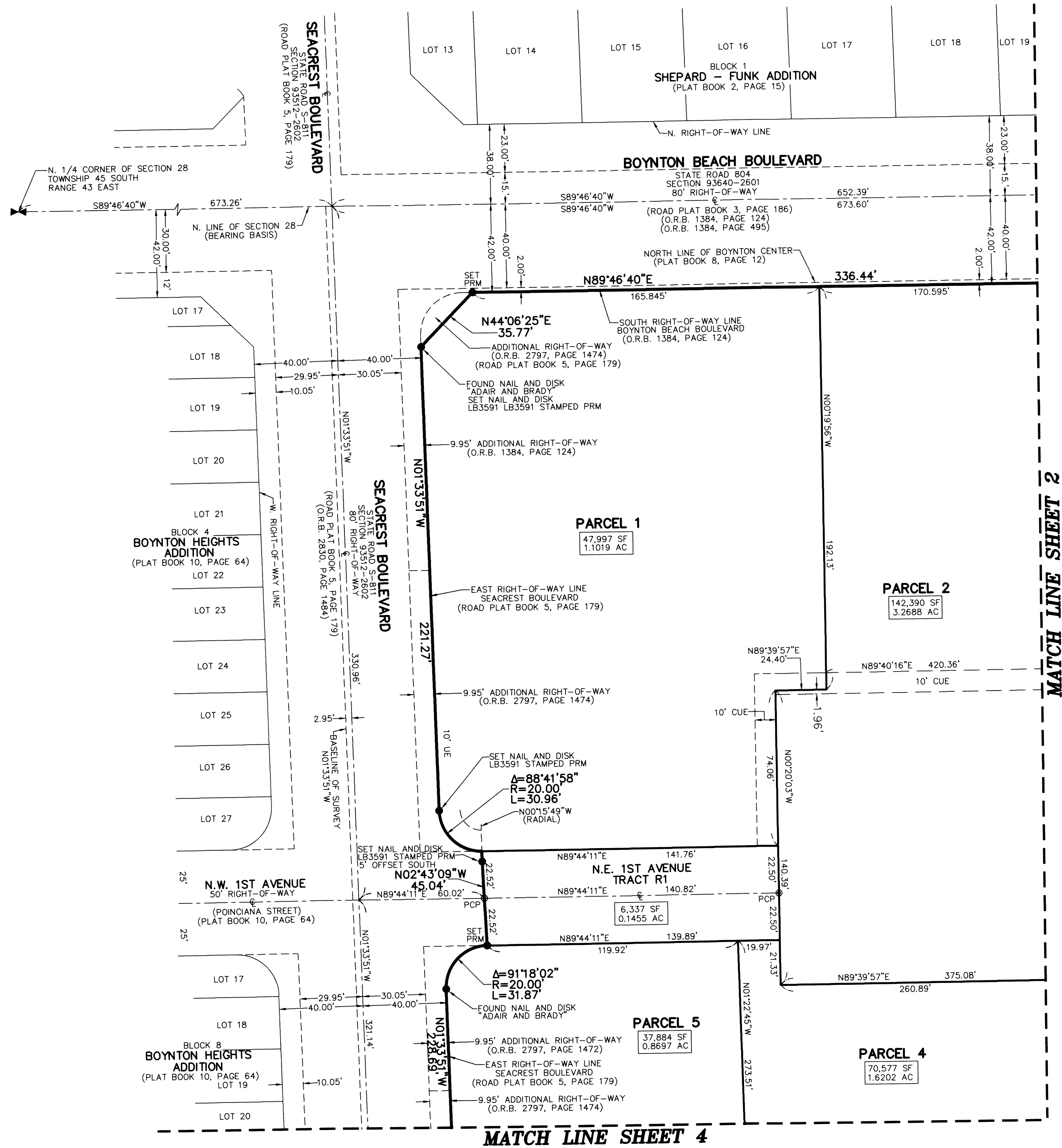
BOYNTON BEACH TOWN SQUARE

BEING A REPLAT OF LOTS 2, 3, 4, AND LOTS 16 THROUGH 24, TOGETHER WITH PORTIONS OF LOTS 5 THROUGH 15, LOT 25,
 AND A PORTION OF POINCIANA STREET, ALL OF BOYNTON CENTER, AS RECORDED IN PLAT BOOK 8, PAGE 12,
 TOGETHER WITH
 LOTS 1 THROUGH 5 AND THE PUBLIC SCHOOL TRACT, TOGETHER WITH A PORTION OF LOT 6, ALL OF BLOCK 14,
 LOTS 2 THROUGH 5, TOGETHER WITH A PORTION OF LOT 6, ALL OF BLOCK 15,
 LOTS 1 THROUGH 5, TOGETHER WITH A PORTION OF LOT 6, ALL OF BLOCK 16,
 AND PORTIONS OF POINCIANA STREET AND OCEAN AVENUE,
 ALL OF SAWYER'S ADDITION TO THE TOWN OF BOYNTON, AS RECORDED IN PLAT BOOK 1, PAGE 69,
 TOGETHER WITH
 LOTS 11 THROUGH 14, BLOCK 13, TOWN OF BOYNTON, AS RECORDED IN PLAT BOOK 1, PAGE 23,
 ALL OF THE PUBLIC RECORDS OF PALM BEACH COUNTY, FLORIDA,
 LYING IN SECTION 28, TOWNSHIP 45 SOUTH, RANGE 43 EAST,
 CITY OF BOYNTON BEACH, PALM BEACH COUNTY, FLORIDA



3

SHEET 3 OF 5



- LEGEND/ABBREVIATIONS**
- ⊕ - CENTERLINE
 - Δ - DELTA (CENTRAL ANGLE)
 - AC - ACRES
 - BBDE - BOYNTON BEACH DRAINAGE EASEMENT
 - BBUE - BOYNTON BEACH UTILITY EASEMENT
 - CB - CHORD BEARING
 - CD - CHORD DISTANCE
 - CUE - CITY OF BOYNTON BEACH UTILITY EASEMENT
 - FPL - FLORIDA POWER & LIGHT CO.
 - F.D.O.T. - FLORIDA DEPARTMENT OF TRANSPORTATION
 - L - ARC LENGTH
 - LB - LICENSED BUSINESS
 - O.R.B. - OFFICIAL RECORD BOOK
 - P.I. - POINT OF INTERSECTION
 - R - RADIUS
 - SF - SQUARE FEET
 - UE - UTILITY EASEMENT
 - PRM - INDICATES PERMANENT REFERENCE MONUMENT
 - 5/8" IRON ROD WITH CAP STAMPED "PRM LB#3591" UNLESS OTHERWISE NOTED.
 - ⊙ PCP - DENOTES PERMANENT CONTROL POINT

MATCH LINE SHEET 4

MATCH LINE SHEET 2